



UNIQUE GRINDING
SOLUTIONS

SINGLE DOSE
EUREKA ORO



MASTER THE SINGLE DOSE REVOLUTION

mignon
SINGLE DØSE

MADE IN ITALY

Retention has never been so low!!

Eureka R&D have been working hard to develop innovative technical solutions with the goal to lead the coffee retention even closer to ZERØ. The Blow Up System and the 15° body incline, typical features of the former Mignon Single Dose, are preserved and combined with **New ZERØ-Retention Grind Chamber** designed to further reduce the retention. All this united to the innovative Ø 65mm upper blind burr with no screw holes, which contributes **improving coffee retention up to 70%** compared to former Mignon Single Dose.



65 MM UPPER BLIND BURR

Innovative system with no screw holes designed to achieve the **lowest retention** and get a **more consistent grind output** thanks to a **wider grinding surface**.



NEW ZERØ-RETENTION GRIND CHAMBER

New chamber designed to further **reduce the coffee retention**.



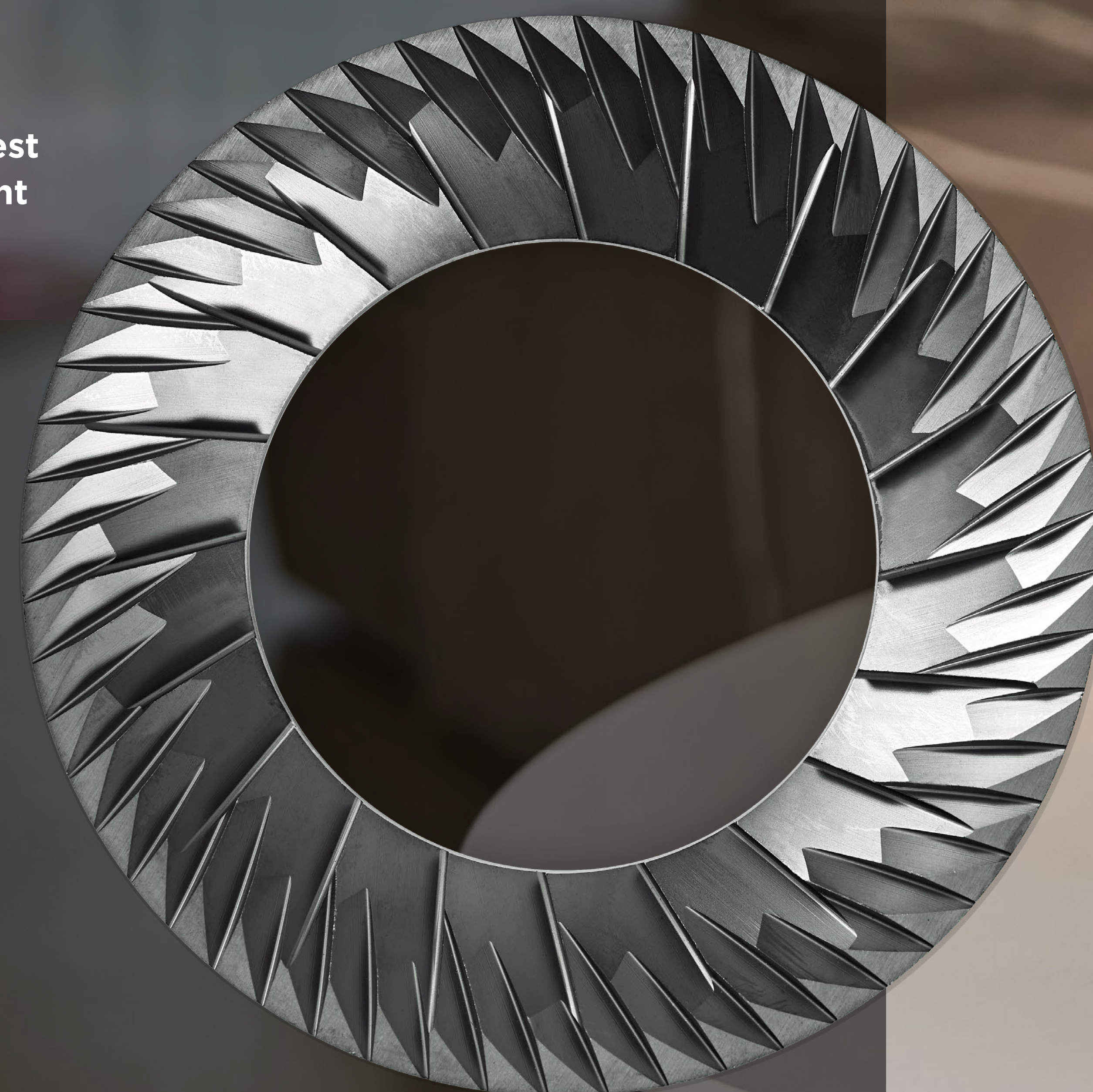
BLOW UP SYSTEM



15° INCLINED BODY



DIAMOND INSIDE BURRS



15°

Single dose workflow has never been so easy

1. **New King Size Grind Dial with rev counter (patent pending)** designed for maximum comfort and easy adjustment for all brewing methods
2. **Unbreakable bean hopper** (45 g) equipped with the **Anti-Popcorning System**
3. Silent Technology
4. Metal dosing cup (80 gr), with external ring to easily transfer the ground coffee into espresso machine portafilter, combined with **“antichaft” dosing funnel to avoid coffee waste**



New King Size Grind Dial



Unbreakable bean hopper



Silent Technology

Antichaft funnel




4



Do you want to empower your grinding performance, according to your favourite coffee and brewing methods? Discover the **BLACKDIAMOND** and its unique burr solutions!



Longer lifetime thanks to *Diamond Inside Technology* (Patented by Eureka)
Structure and performance unchanged over time, providing a **superior grind consistency**
Unlimited endurance (*Diamond Inside Tech + DLC Black*)
No break-in and **No waste** of coffee with the special **seasoning process** developed by Eureka
Ultra low retention thanks to the innovative **Upper Blind Burr** designed by Eureka

In cooperation with  **italmill**
GRINDING TECHNOLOGY

Espresso Specialty Black

Grind speed: ●●●●

Lifetime extremely high:
+30% Compared to Pure Diamond Burr
+5% Compared to Red Speed Burr

Recommended for: Light-Medium roasted

Excellent

Good

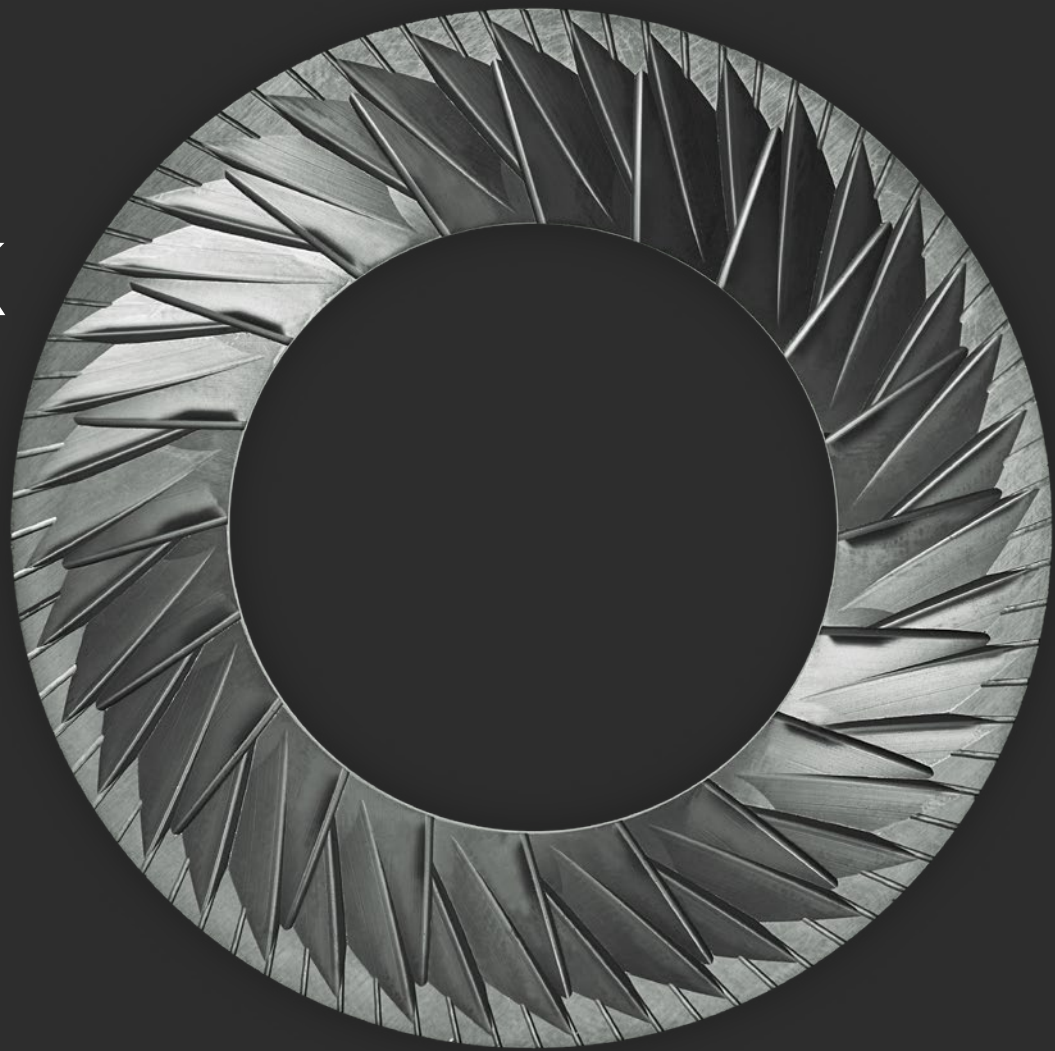
Turkish

Espresso

Moka

Filter

Cold Brew



Italian Espresso Taste Black

Grind speed: ●●●●

Lifetime extremely high:
+30% Compared to Pure Diamond Burr
+5% Compared to Red Speed Burr

Recommended for: Dark roasted

Excellent

Good

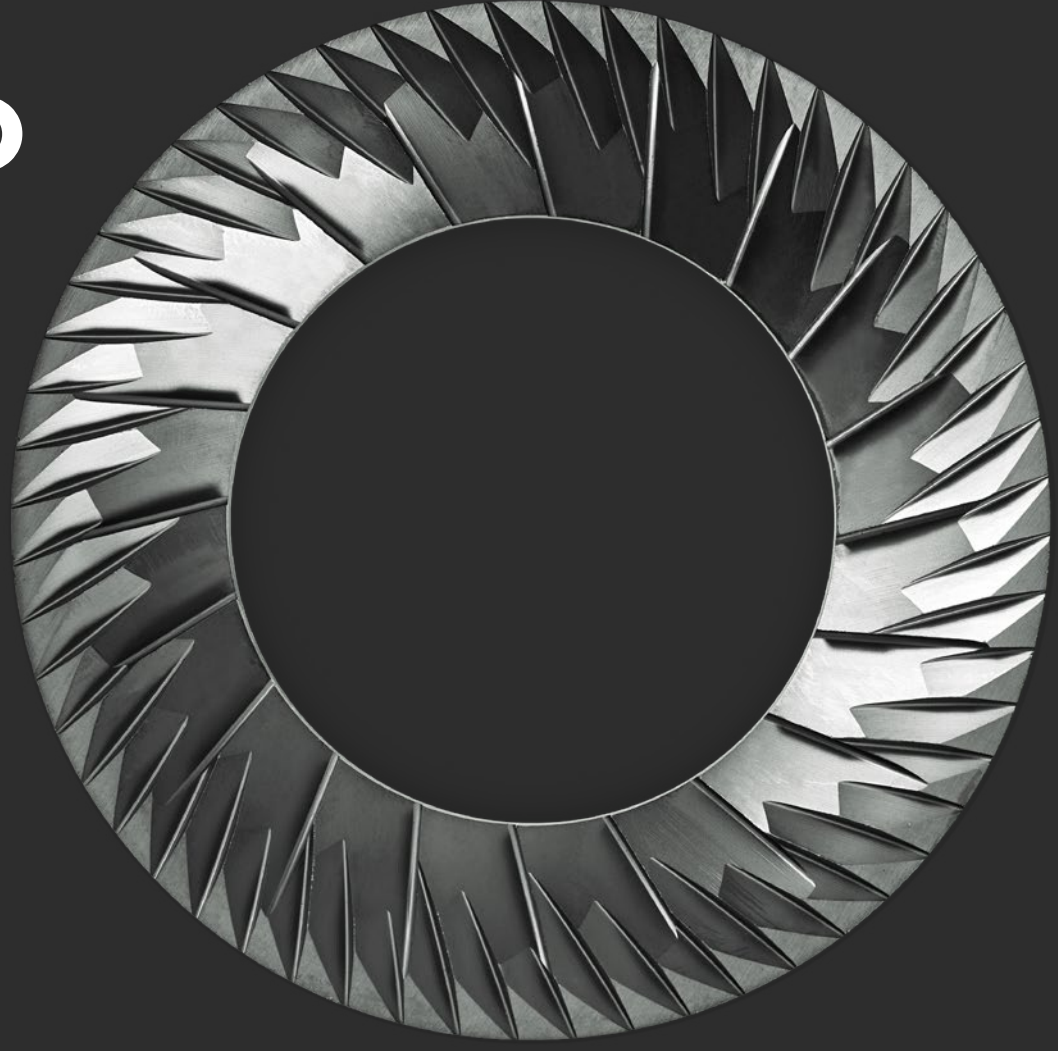
Turkish

Espresso

Moka

Filter

Cold Brew



Brew Special Black

Grind speed: ●●●●●●
up to 4 gr/sec

Lifetime extremely high:
+30% Compared to Pure Diamond Burr
+5% Compared to Red Speed Burr

Recommended for: Light roasted

Excellent

Not-specific

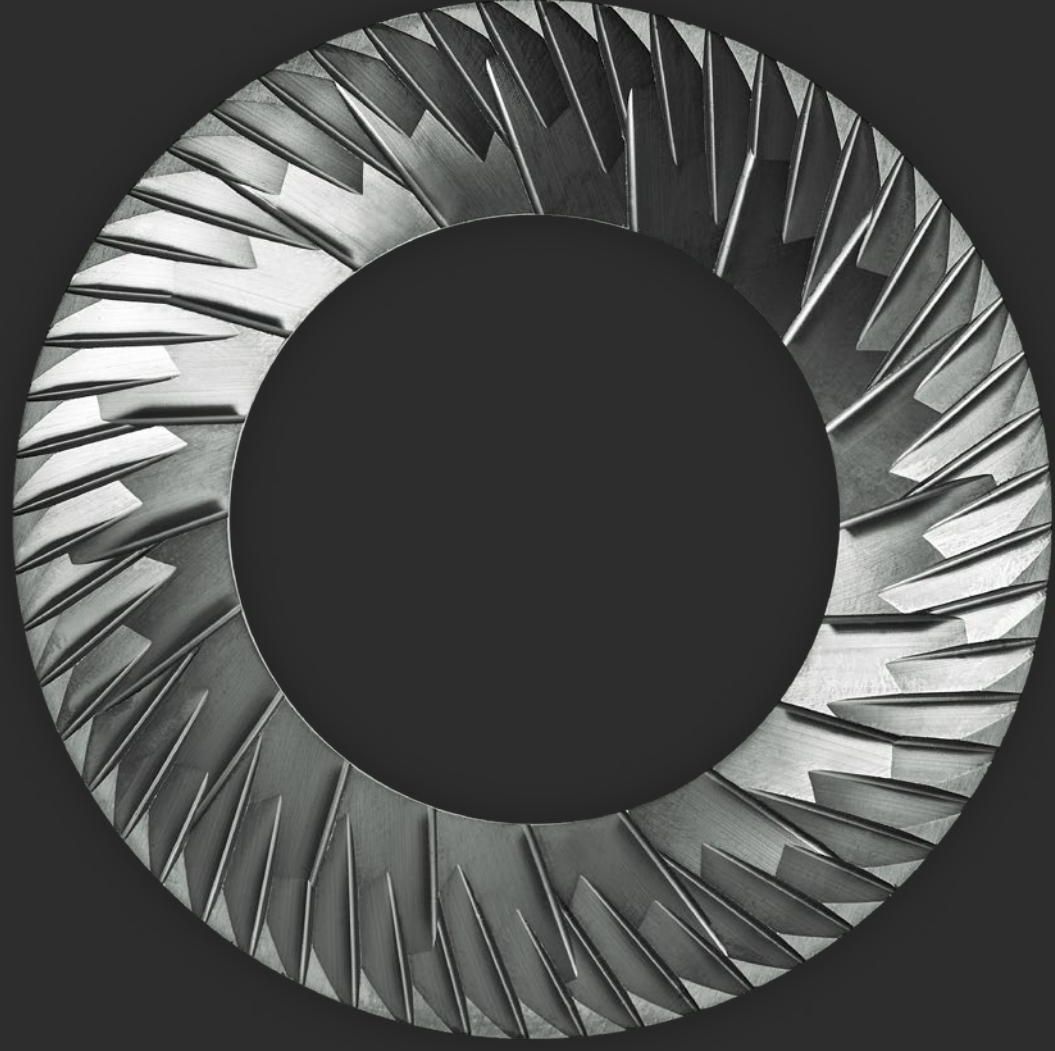
Turkish

Espresso

Moka

Filter

Cold Brew



All Purpose Black

Grind speed: ●●●●

Lifetime extremely high:
+30% Compared to Pure Diamond Burr
+5% Compared to Red Speed Burr

Recommended for: Light roasted

Excellent

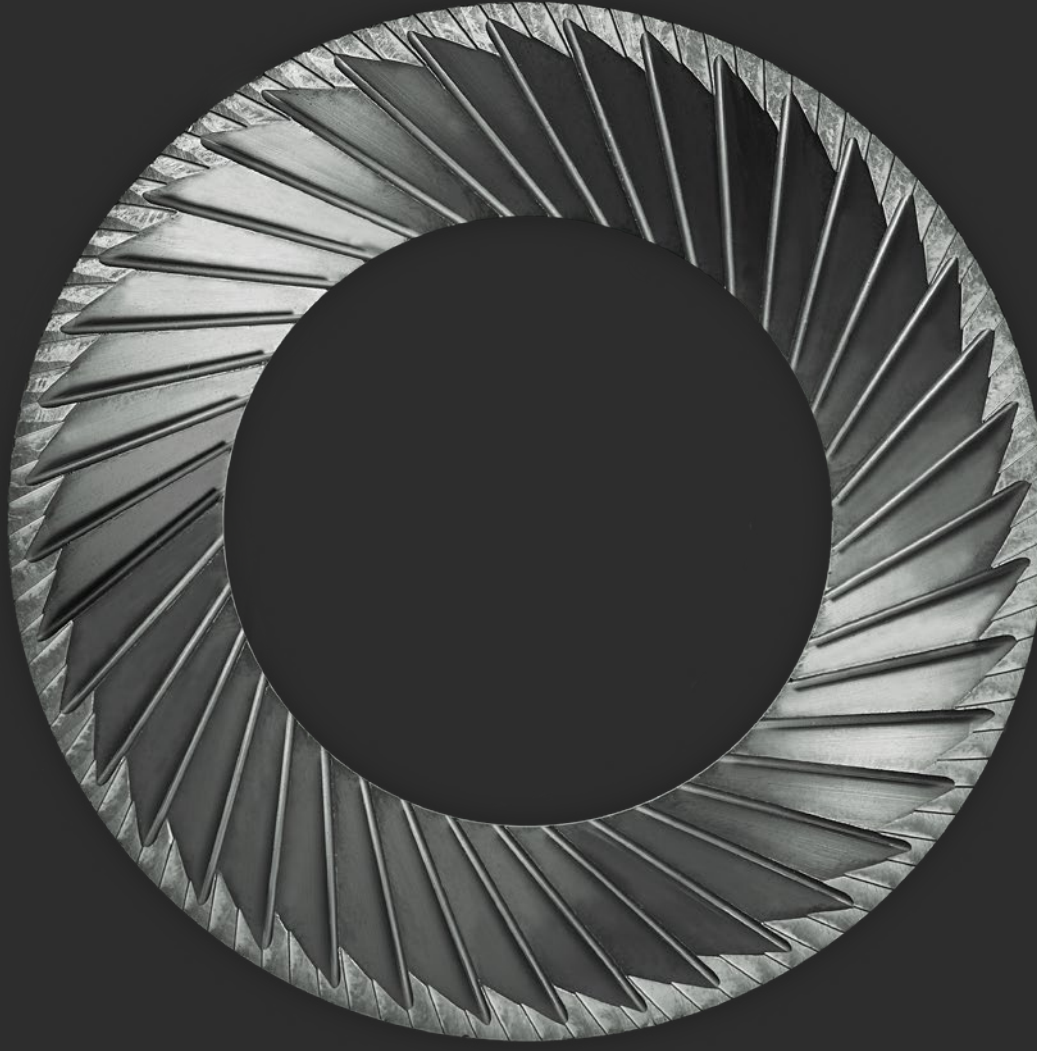
Turkish

Espresso

Moka

Filter

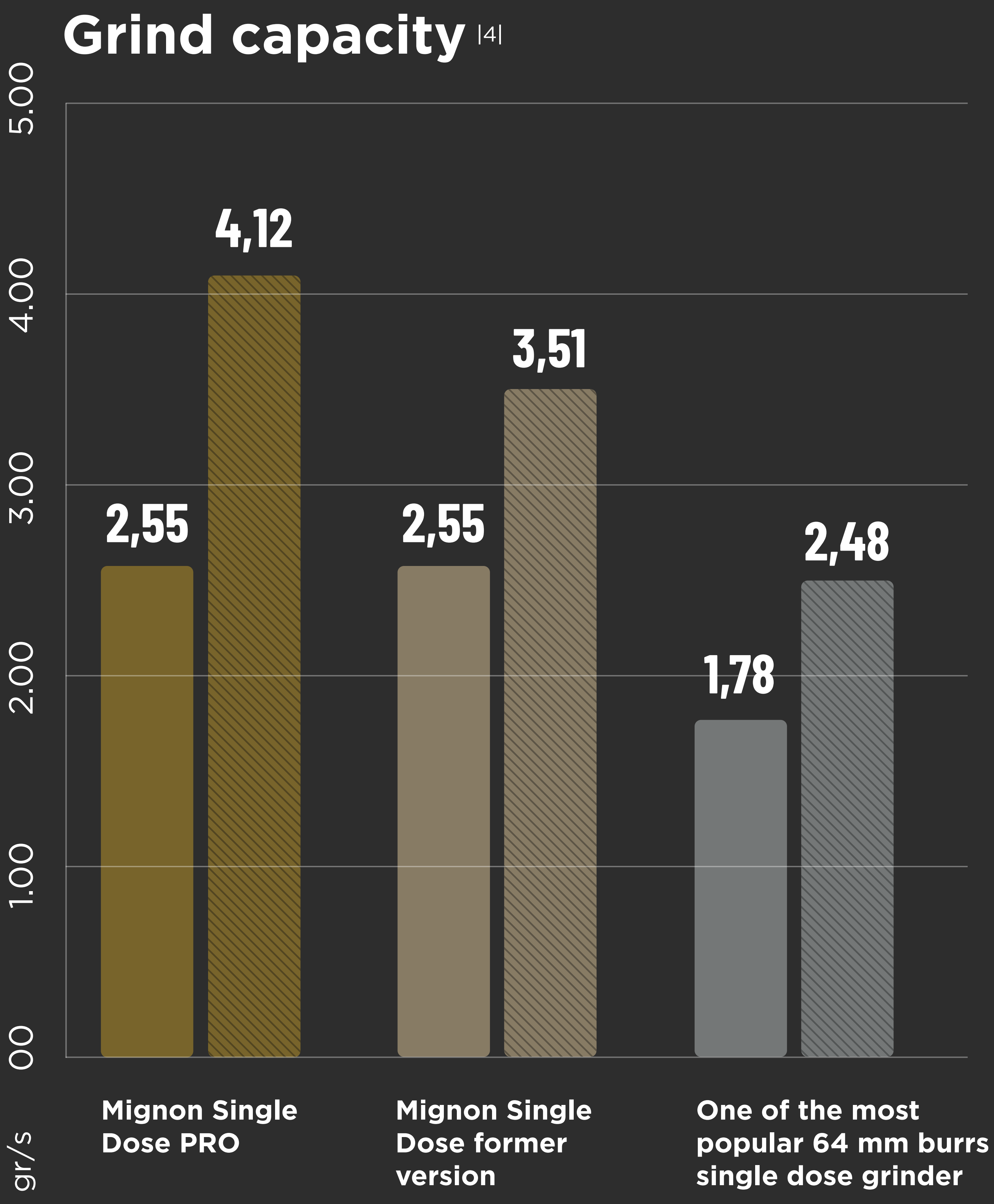
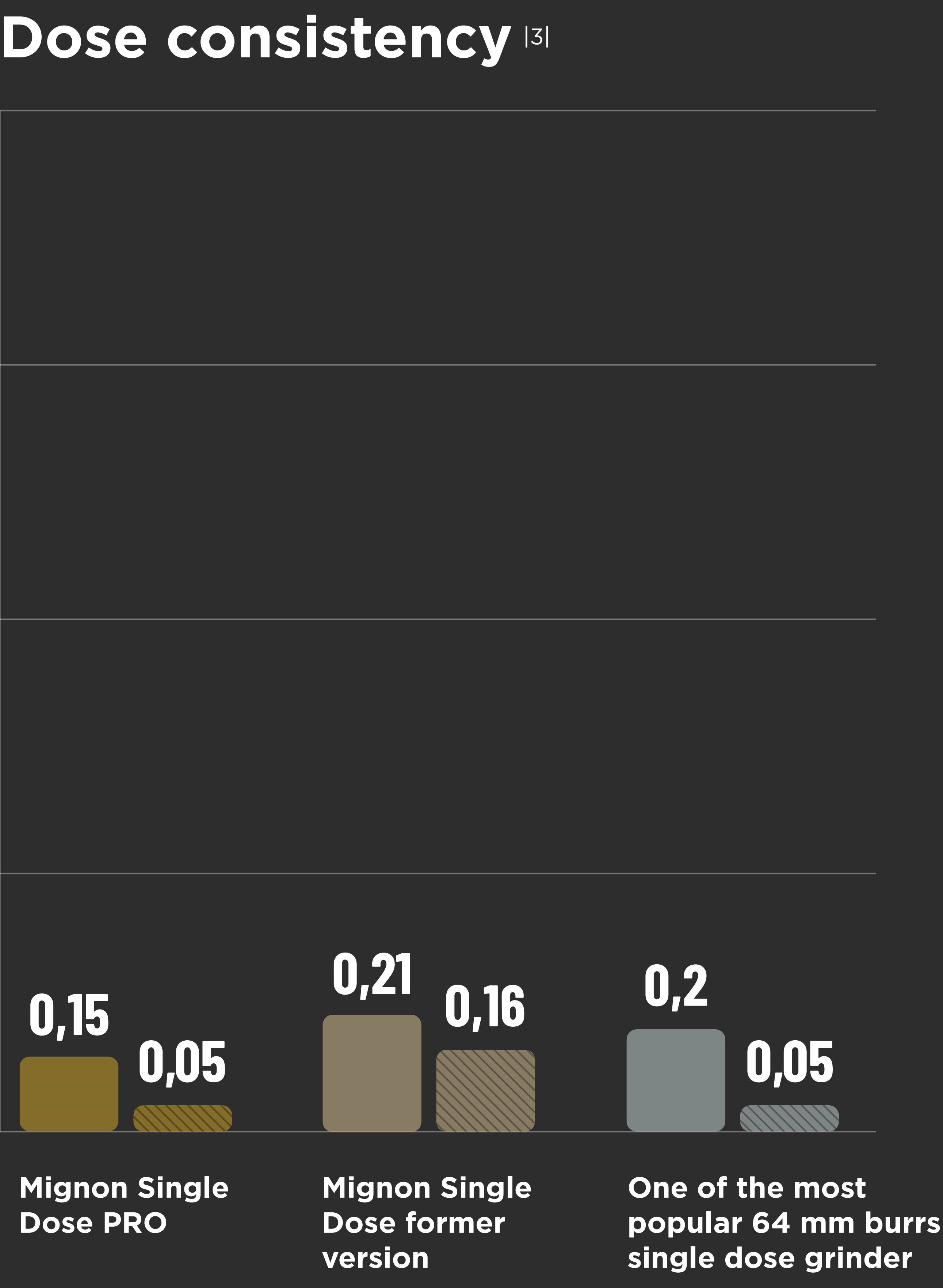
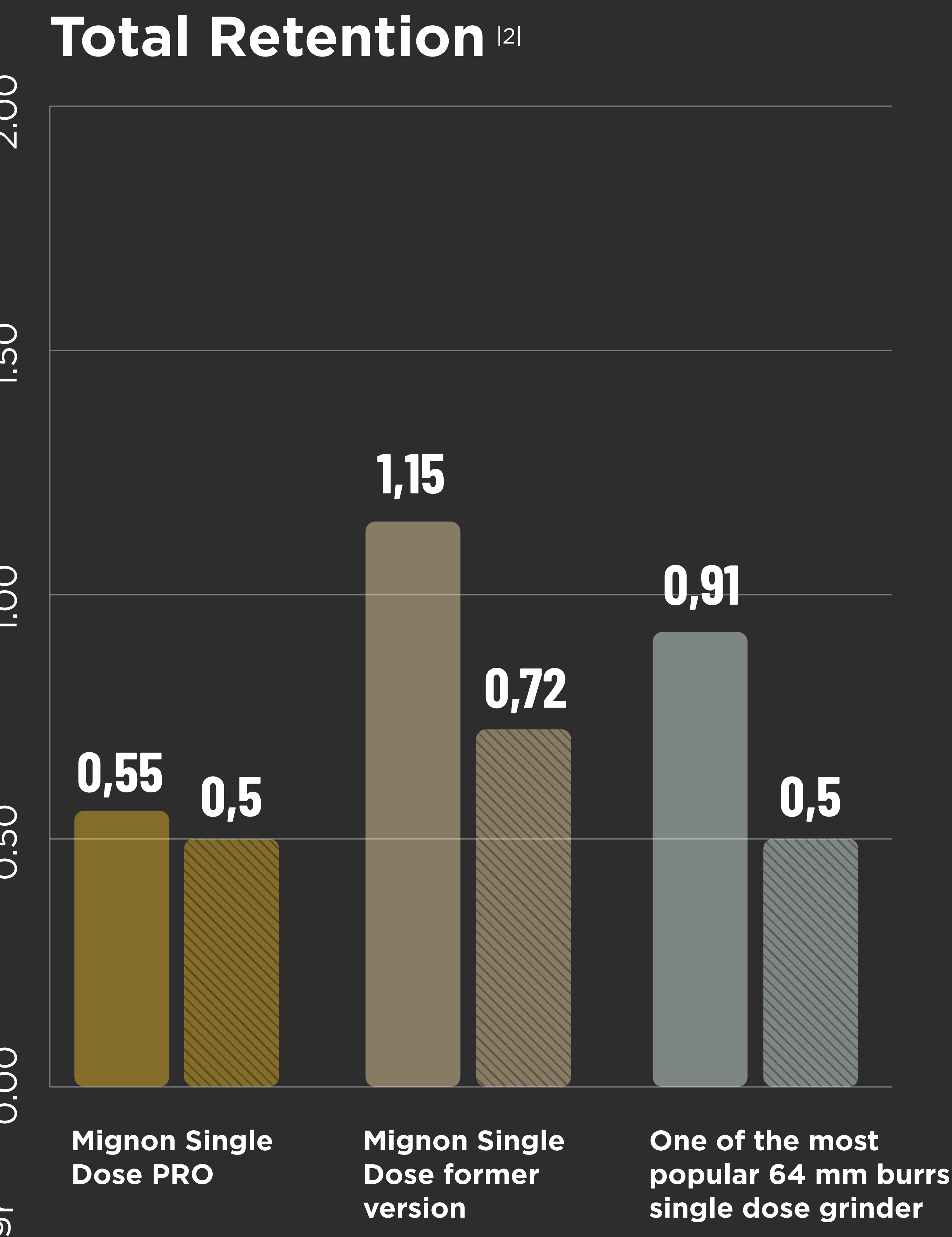
Cold Brew



Want to know more about Black Diamond Burrs? What are you waiting for?

Grinding performance comparison^[1]

65mm Single Dose Grinders



 Espresso setting, medium-light and medium-dark roasted coffee

 Filter setting, mediaum-light roasted coffee

[1] Test conducted by Eureka Lab
[2] Calculated with empty grinding chamber

[3] Based on an average of 10 grinds per setting
[4] Based on an average of 3 grinds per setting

| Technical details | | |
|---------------------|---------------------------------|--|
| Burrs | Type | Flat |
| | Diameter | 65mm (upper blind) |
| | Material | Pure Diamond® (patented Eureka) |
| Engine | RPM | 1650 |
| | Power | 320 W |
| Various | Available version | Manual |
| | Grind capacity | 2,5 - 3,0 Espresso 3,0 - 4,1 Brew |
| Techonological plus | Stepless Micrometric Regulation | Yes |
| | Metal revolving hopper tab | Yes |
| | Blow up cleaning | 0.1lb |
| | ACE System | Yes |
| | New Anti-Retention System | Yes |
| | Hand Brew cup | Yes (80g) |
| | Anti-chaft dosing funnel | Yes |
| | King Size Dial with rev counter | Yes |
| Dimensions | Height | 13.23in - 336mm |
| | Width | 5.04in - 128mm |
| | Depth | 7.32in - 186mm |
| | Weight | 15,87lb - 7,2kg |
| | Bean hopper capacity | 0.1lb - 45g |
| Setting up | 16CR | |
| Colours | Standard | Matt black & chrome and White & chrome |
| | Special | All chrome |

